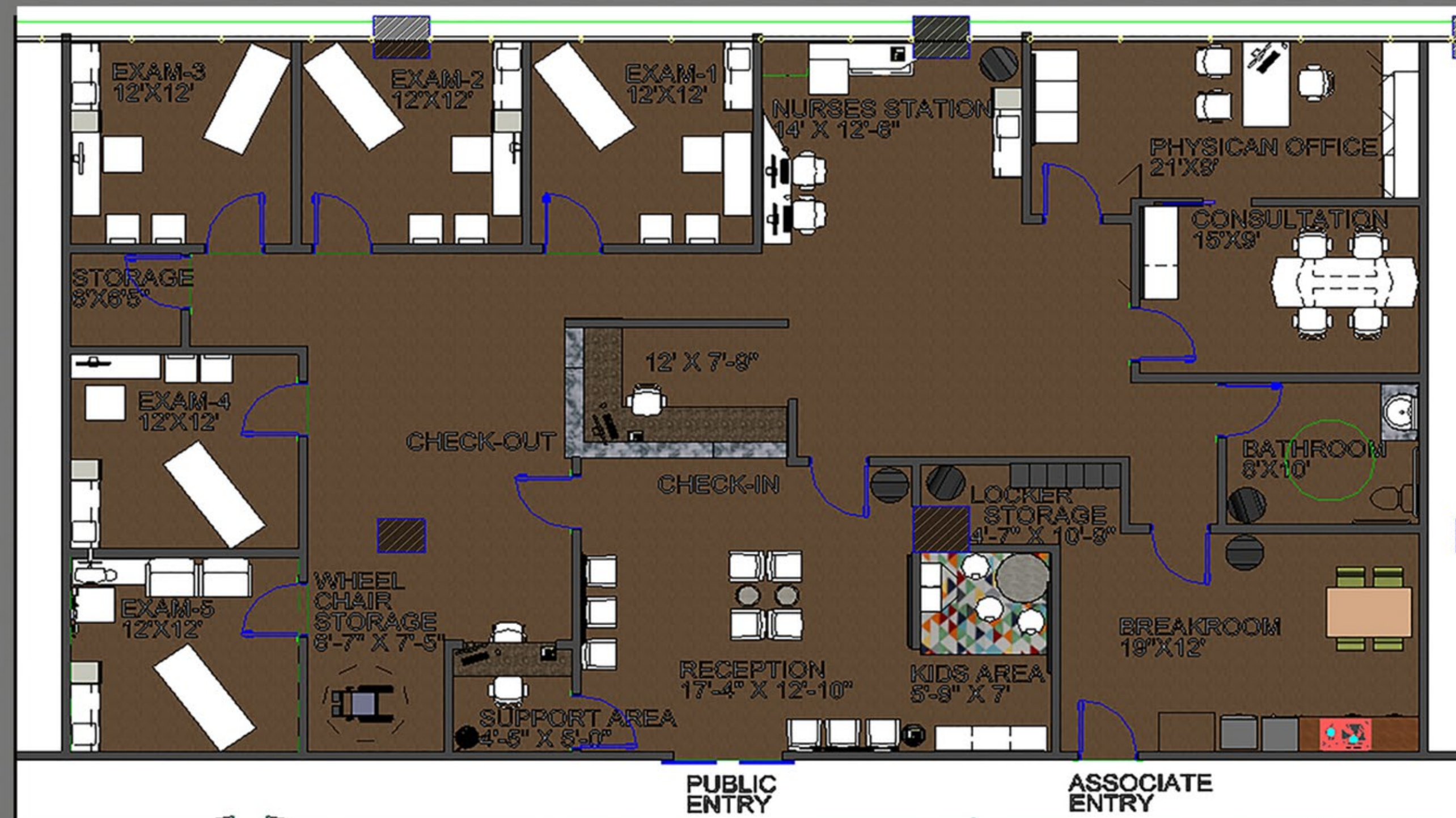


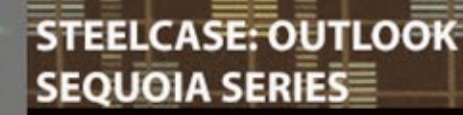
LOCATION OF DR. OFFICE



FLOOR PLAN

FLOOR PLAN WITH DIMENSIONS





GRAPHITE FOREST LAMINATE

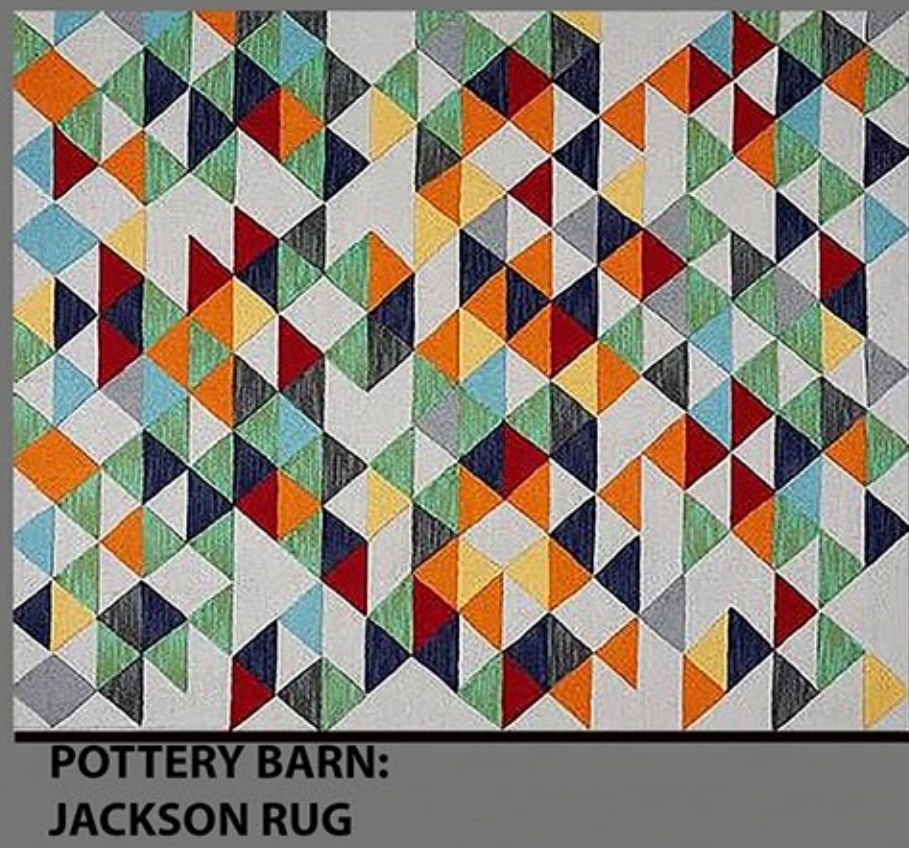
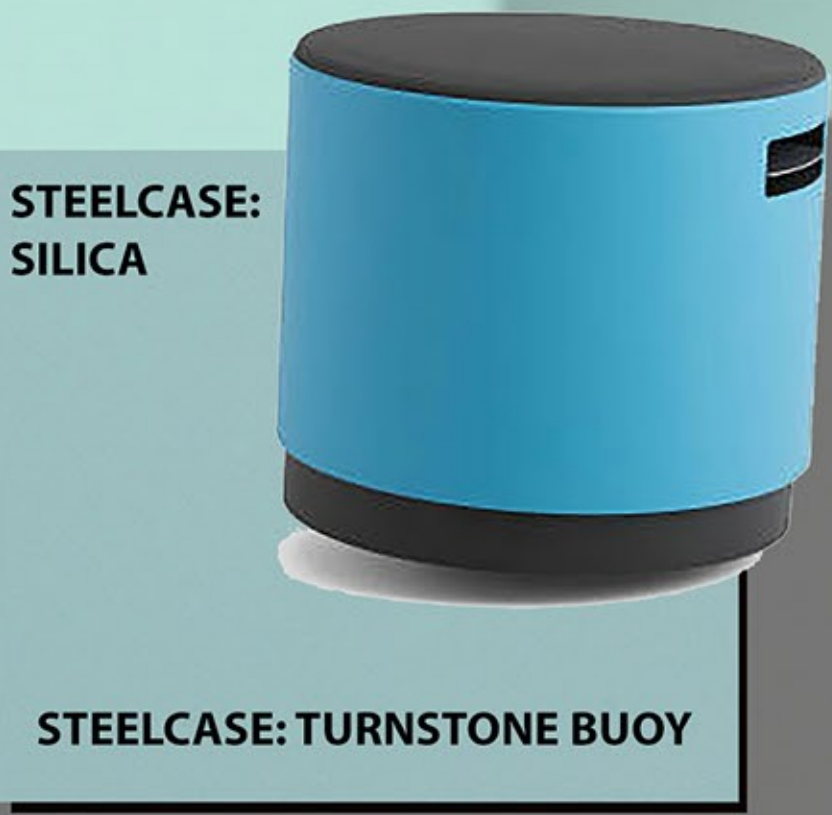
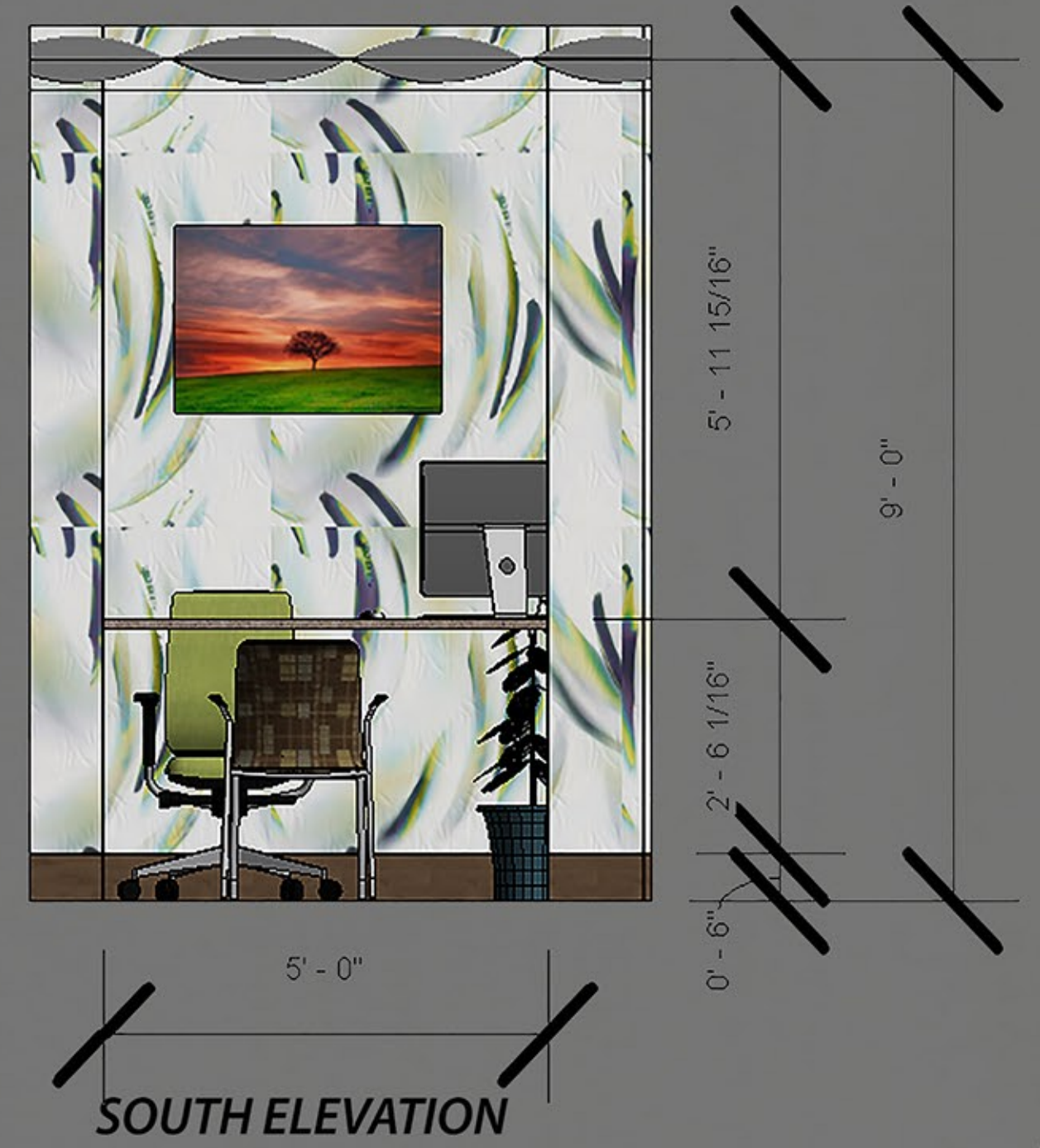
DARK EMPERADOR  
GRANITE COUNTERTOP

MARBLE SQUARE STACKED

RECEPTION/ WAITING AREA

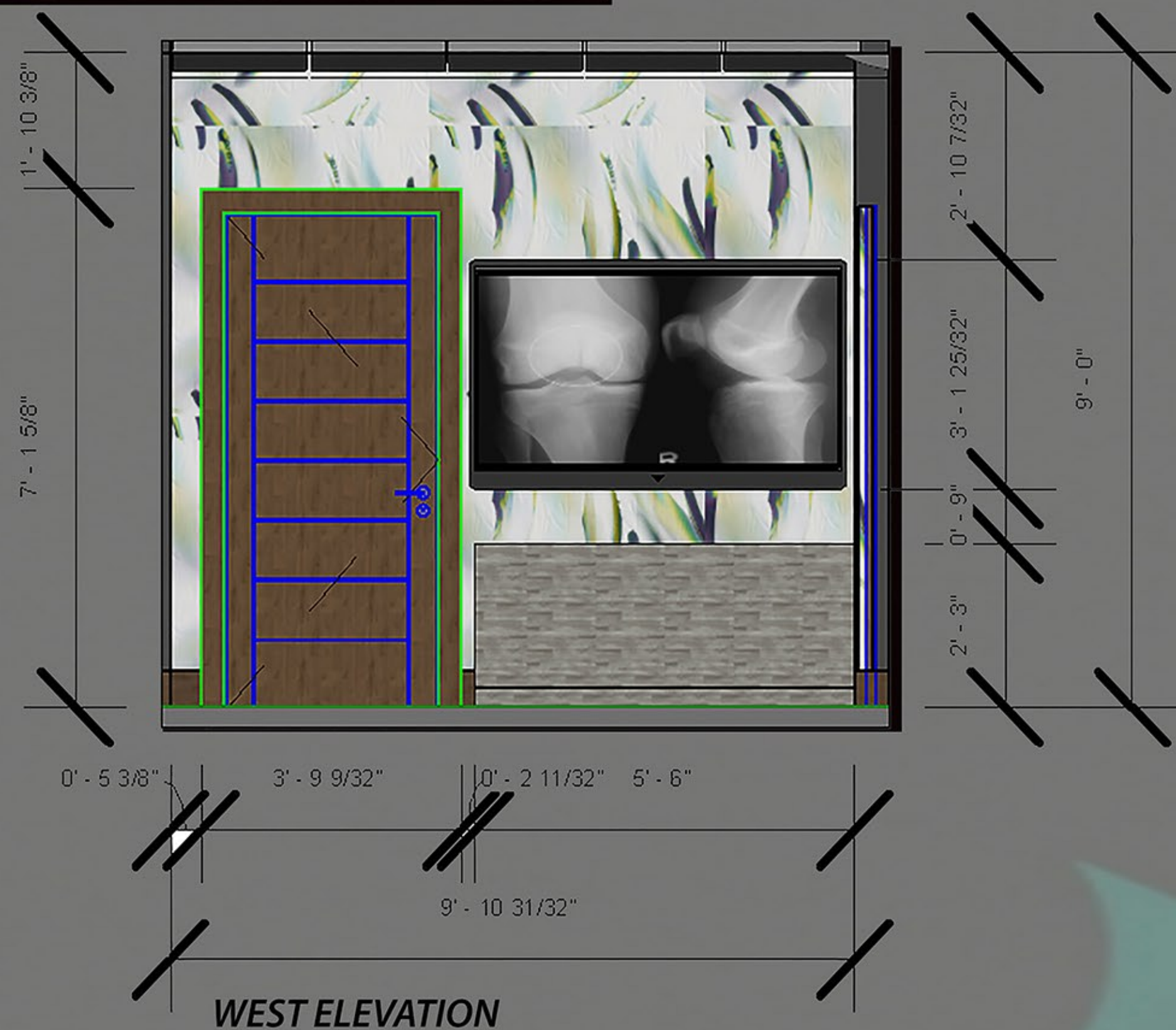
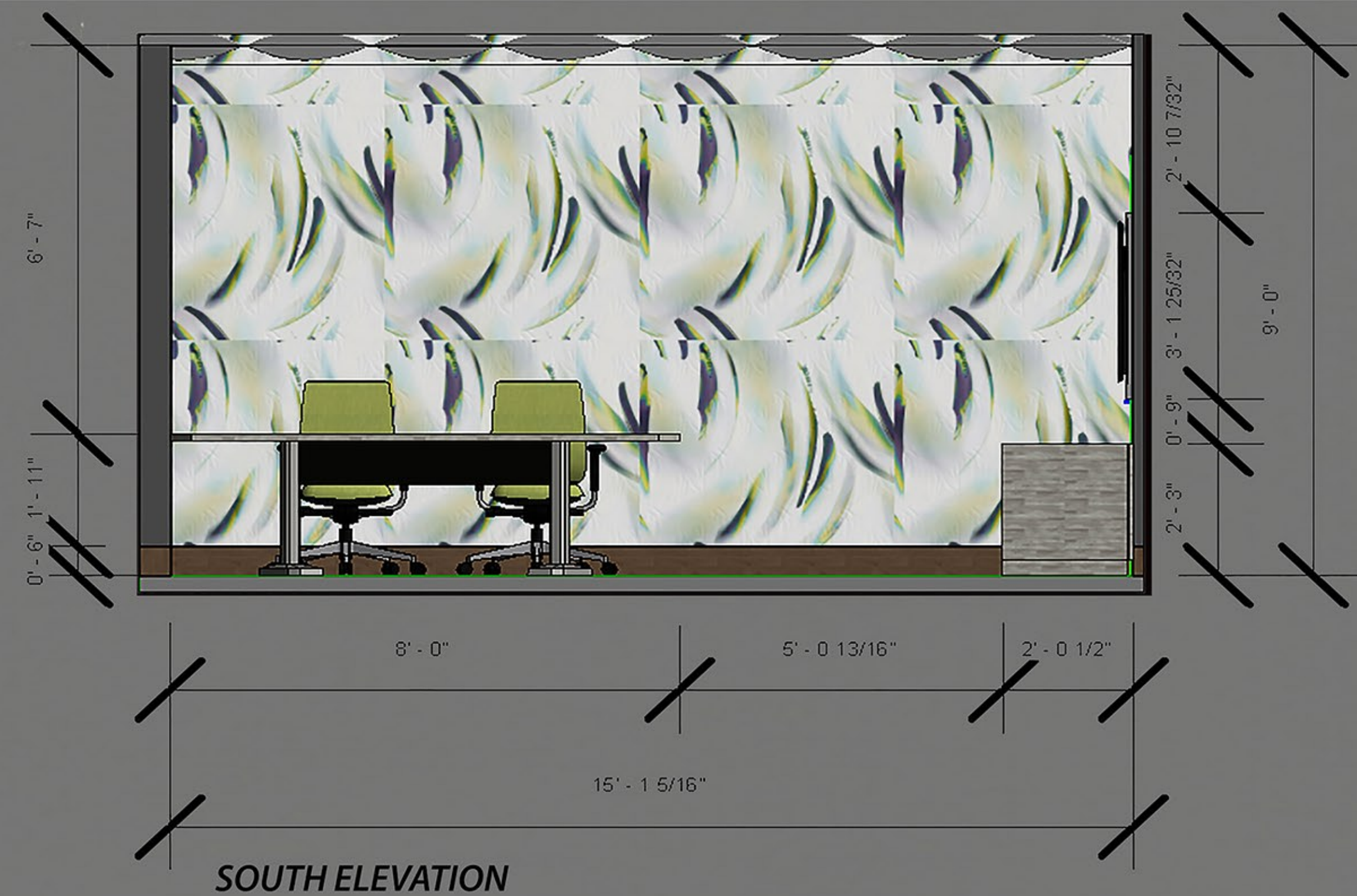
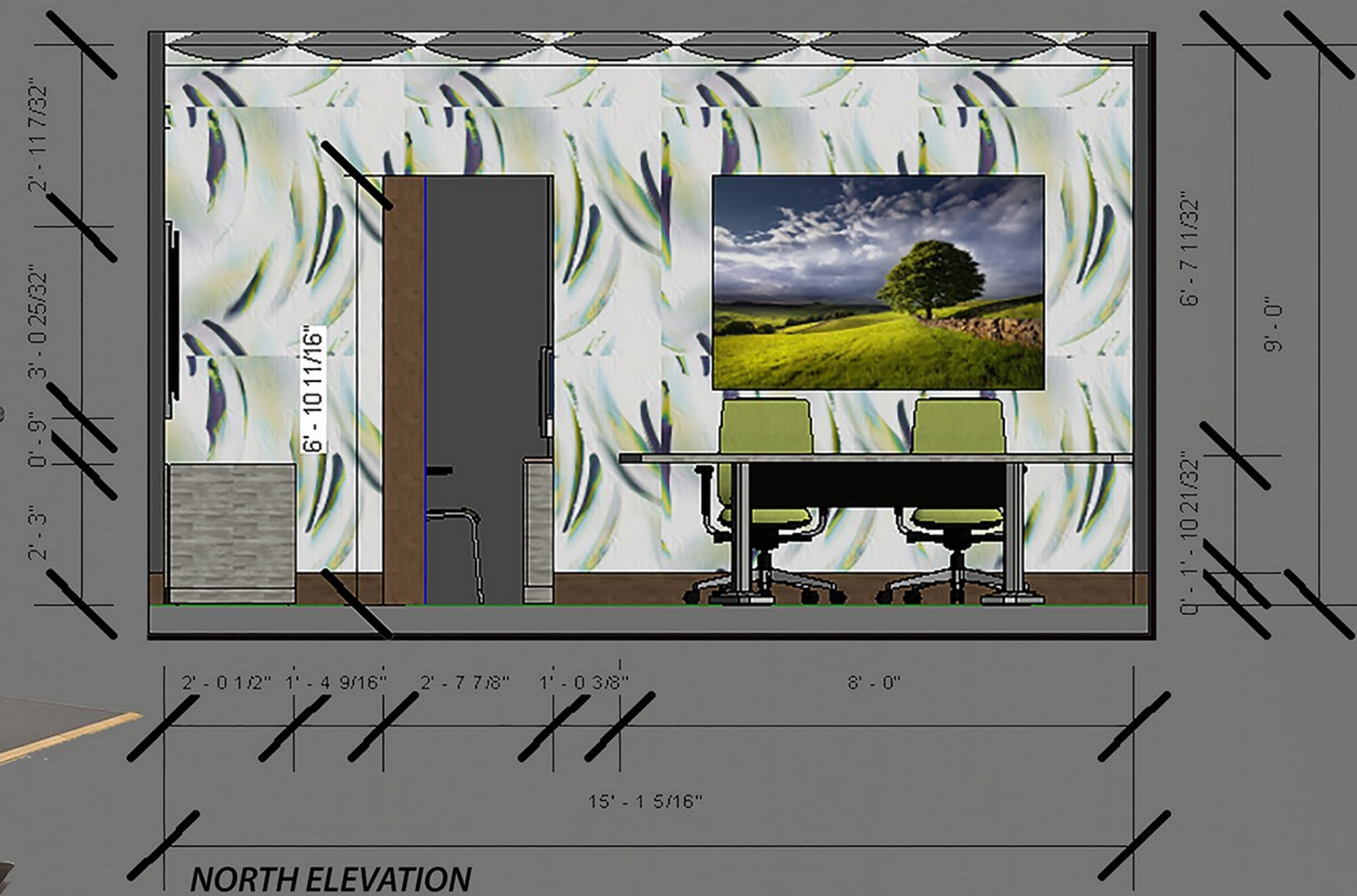
NORTH ELEVATION





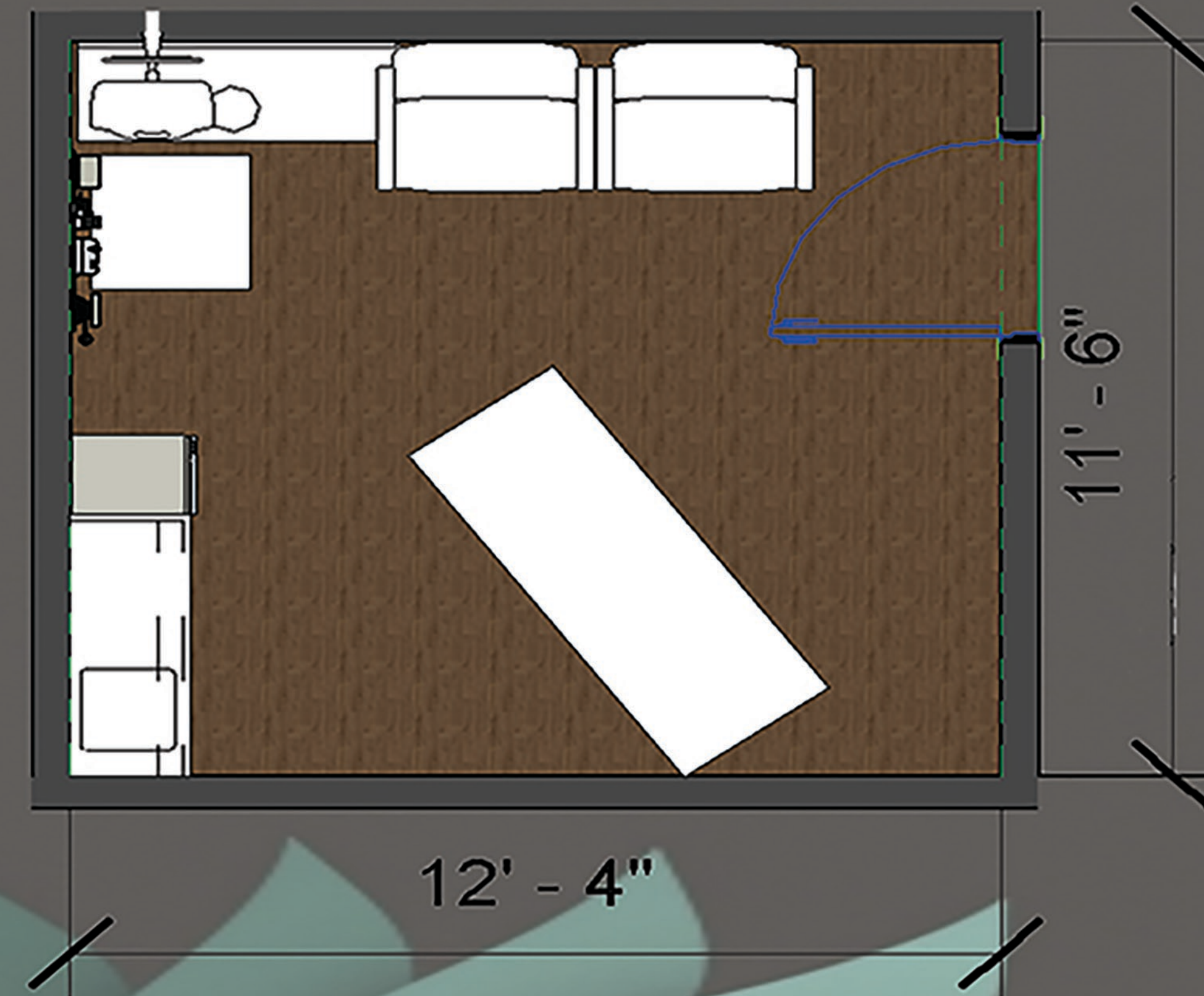
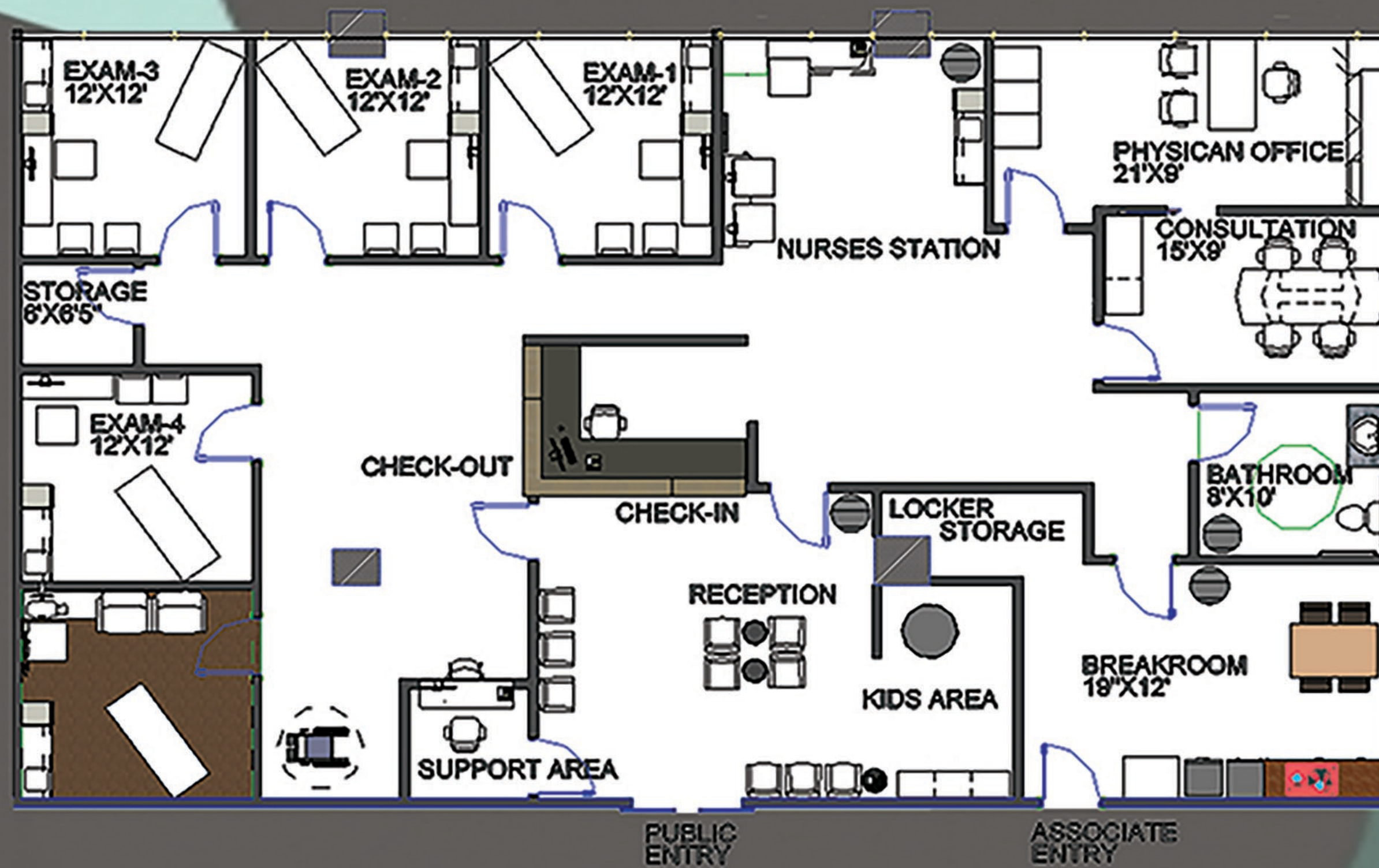
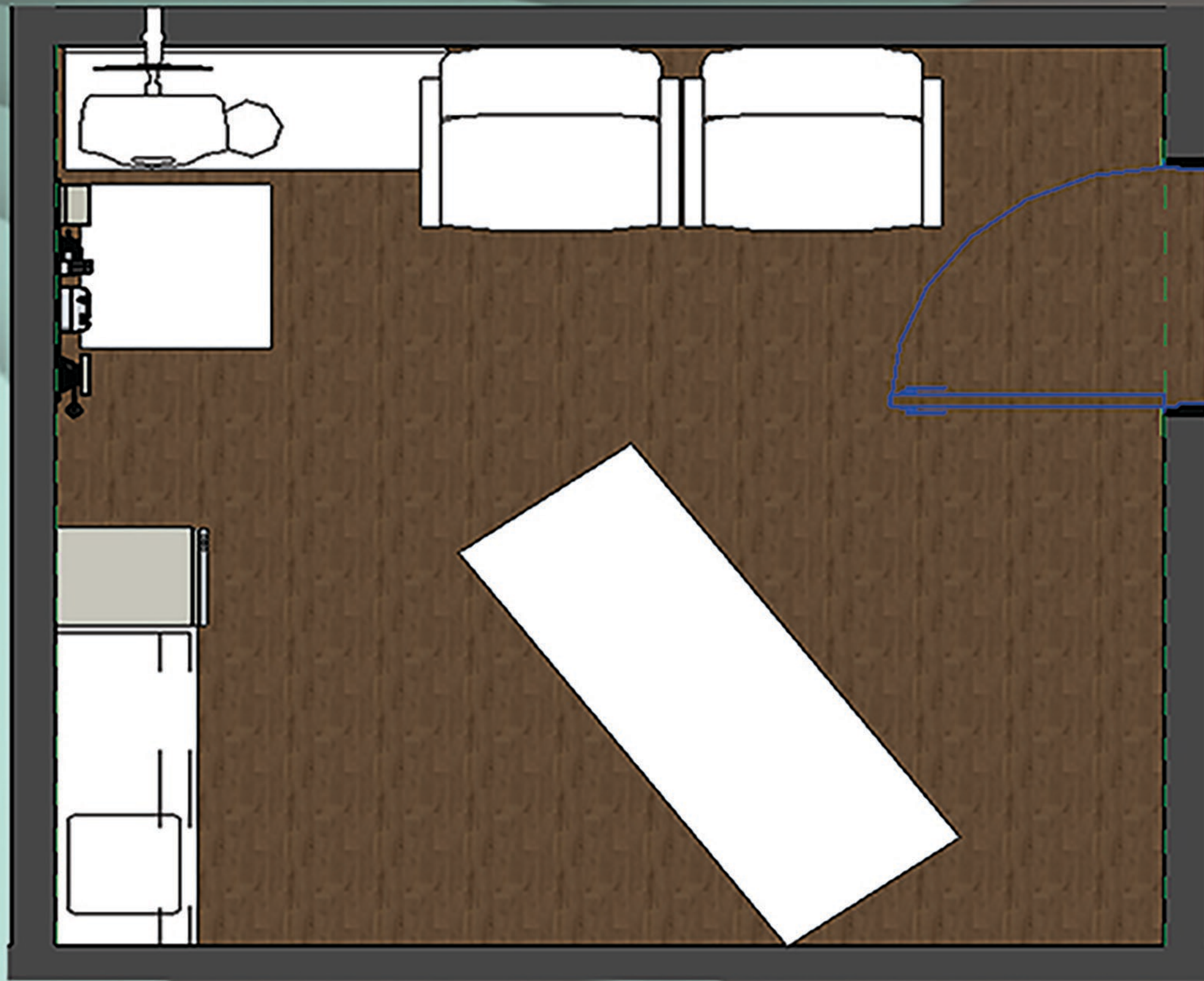
**KIDS AREA/SUPPORT AREA**





CONSULTATION SPACE





CLINICAL EXAM ROOM





STEELCASE:  
COZY PERIDOT



STEELCASE THINK CHAIR

STEELCASE:  
BEAT BOX



STEELCASE: OUTLOOK  
SEQUOIA SERIES

STEELCASE REALM



STEELCASE AWAIT

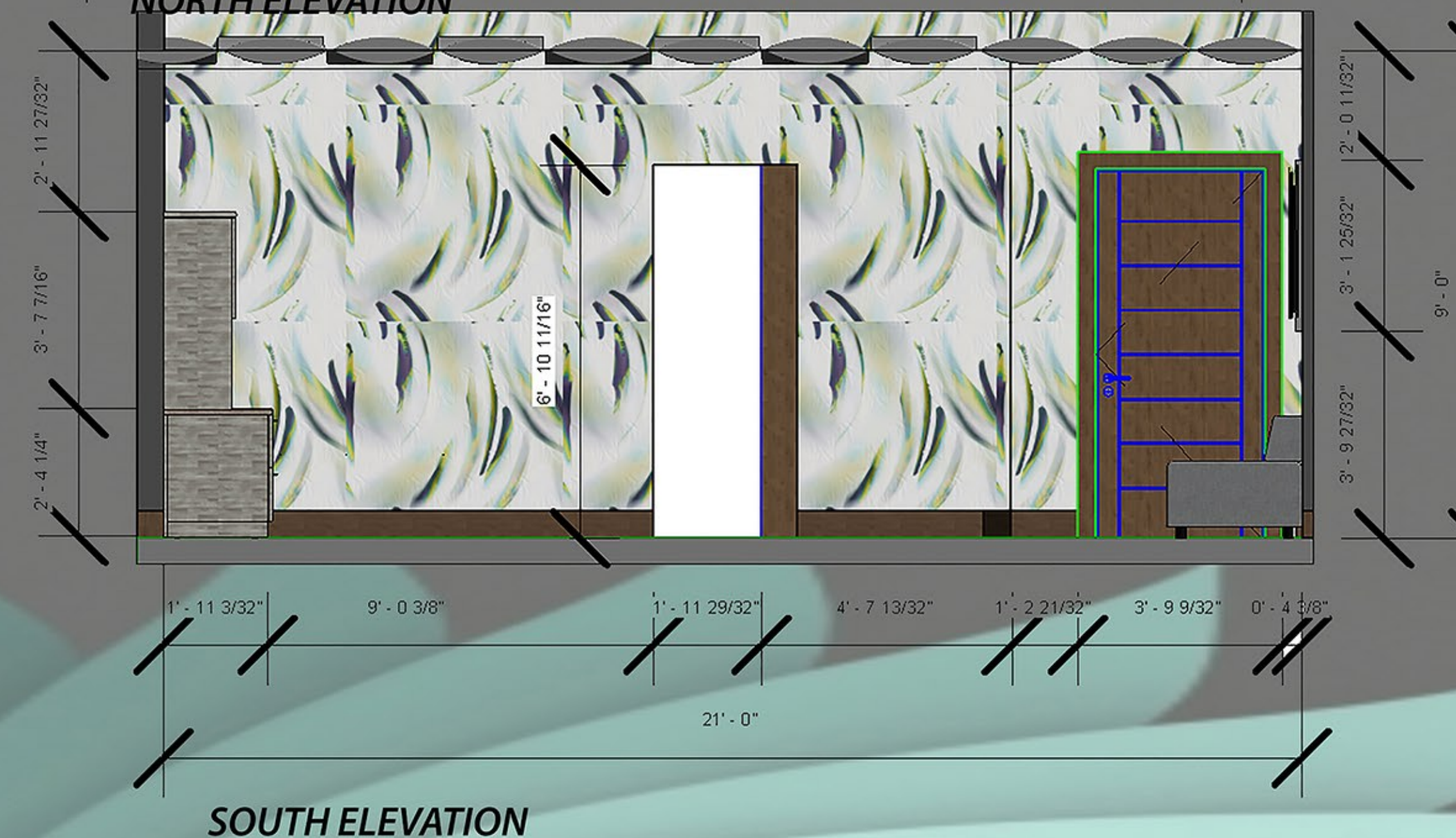
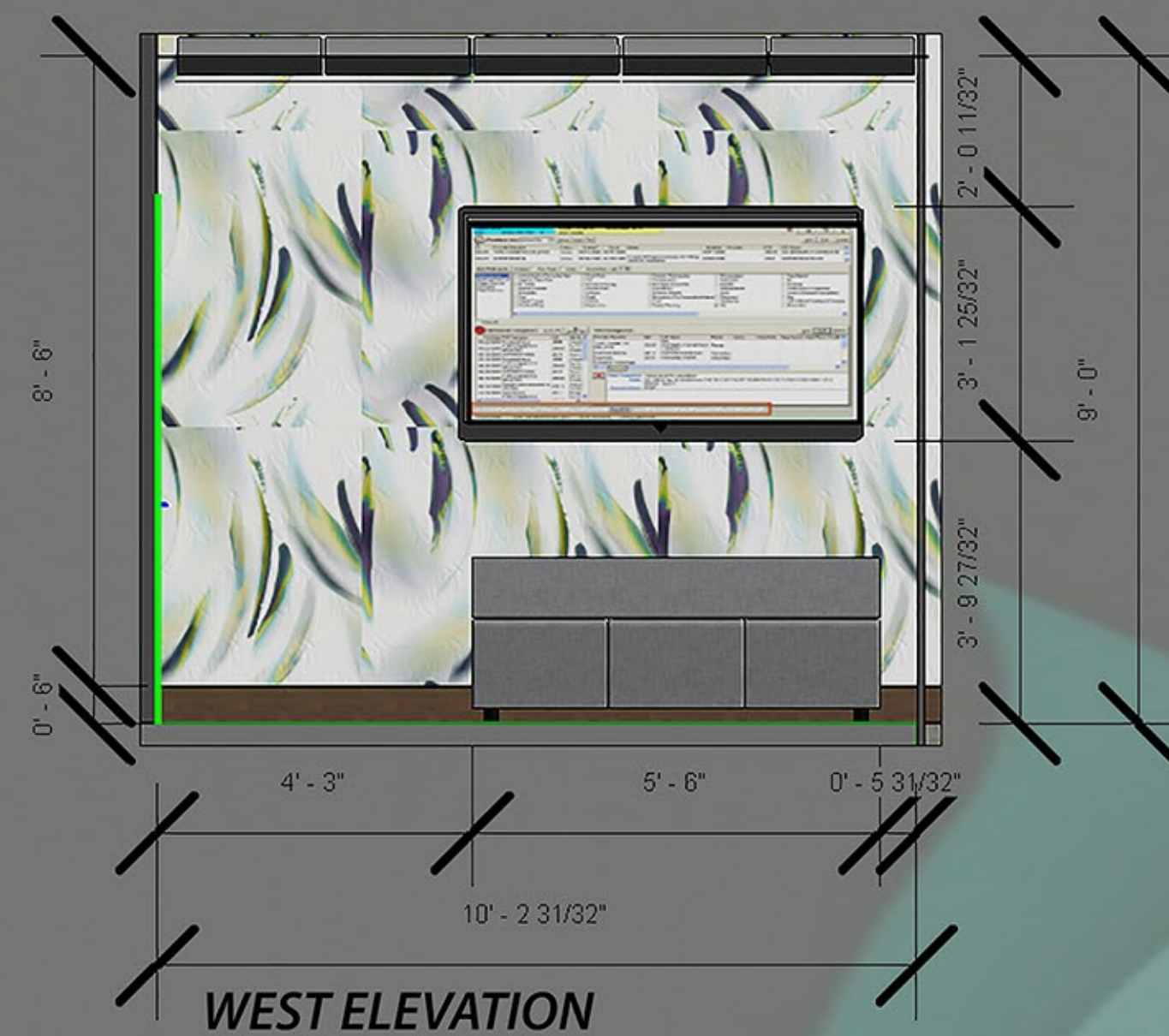
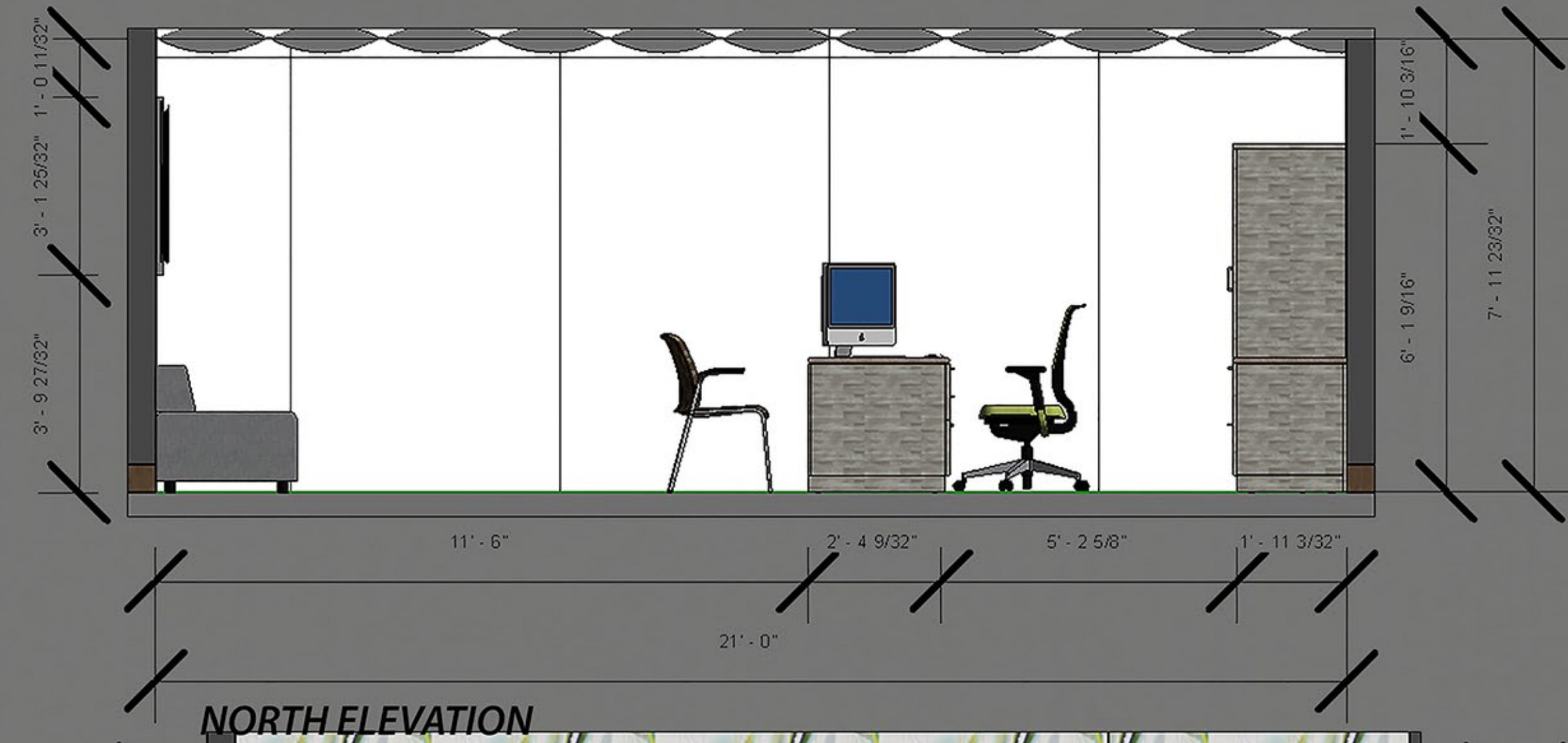
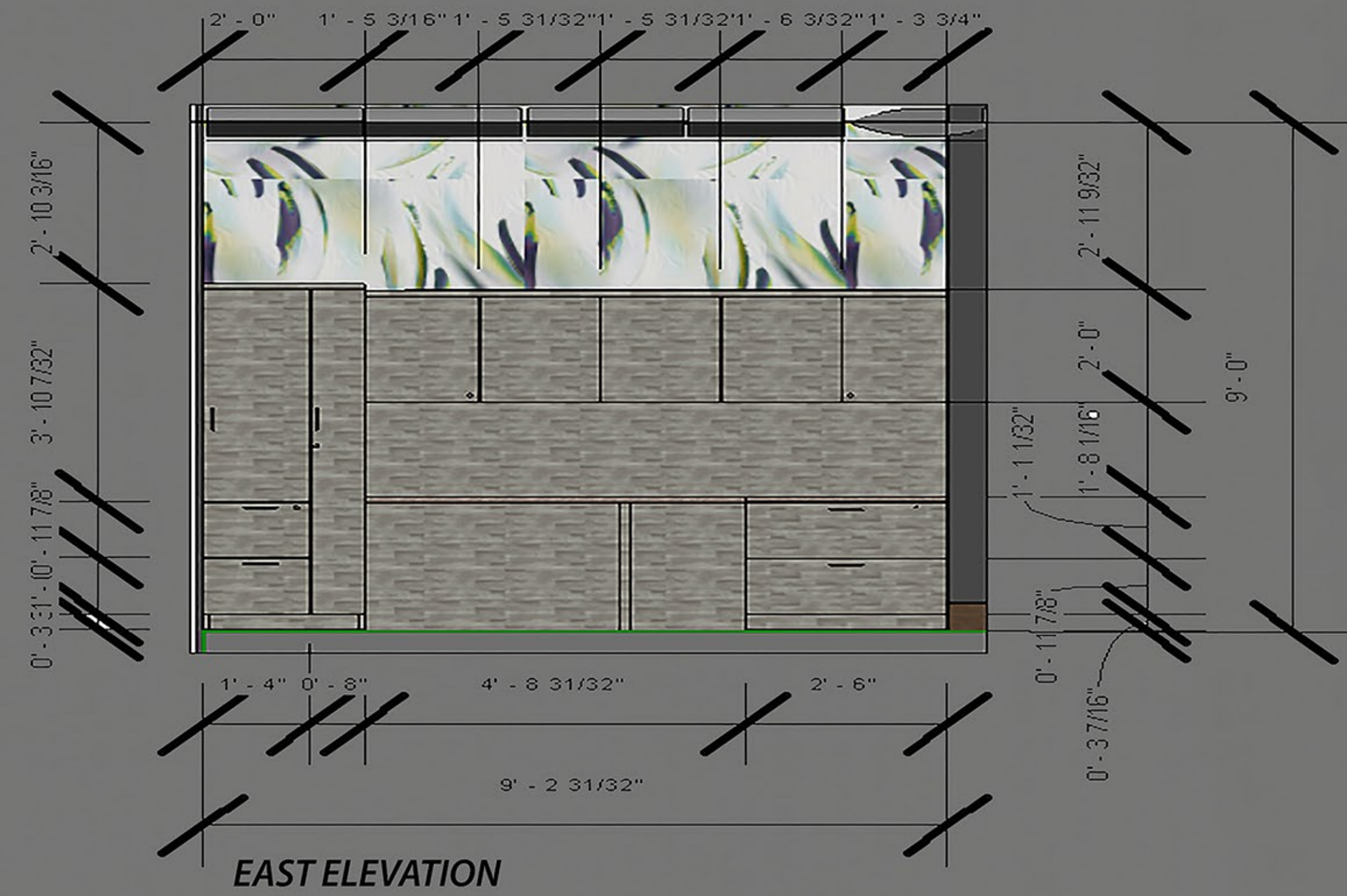
STEELCASE GARLAND



CABINETS  
2HCNCLAY NOCE

FLOORING  
SARLON OAK

WHITE CARRARA MARBLE



PHYSICIANS OFFICE





STEELCASE SIMPLE TABLES



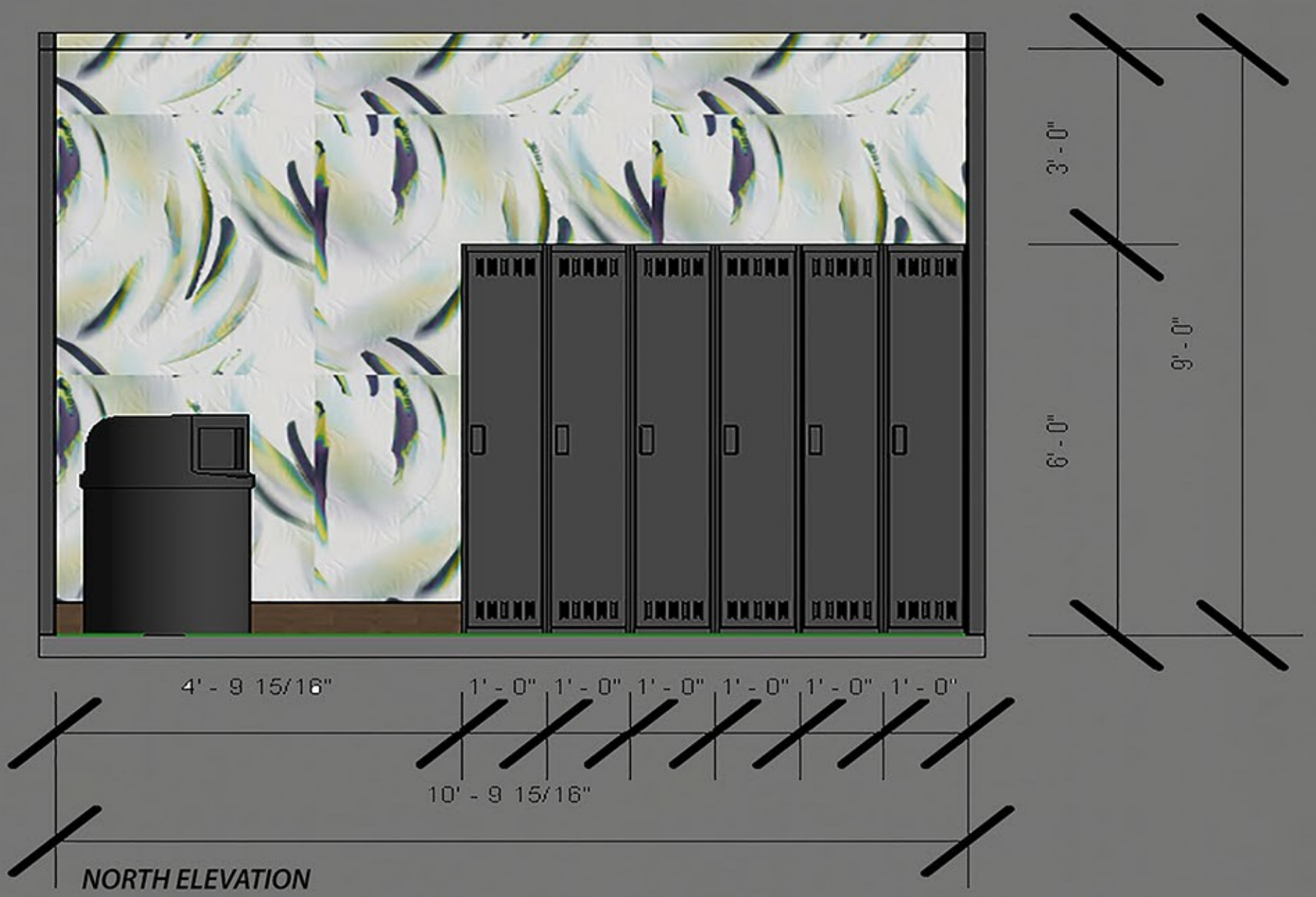
CABINETS  
2HCNCLAY NOCE



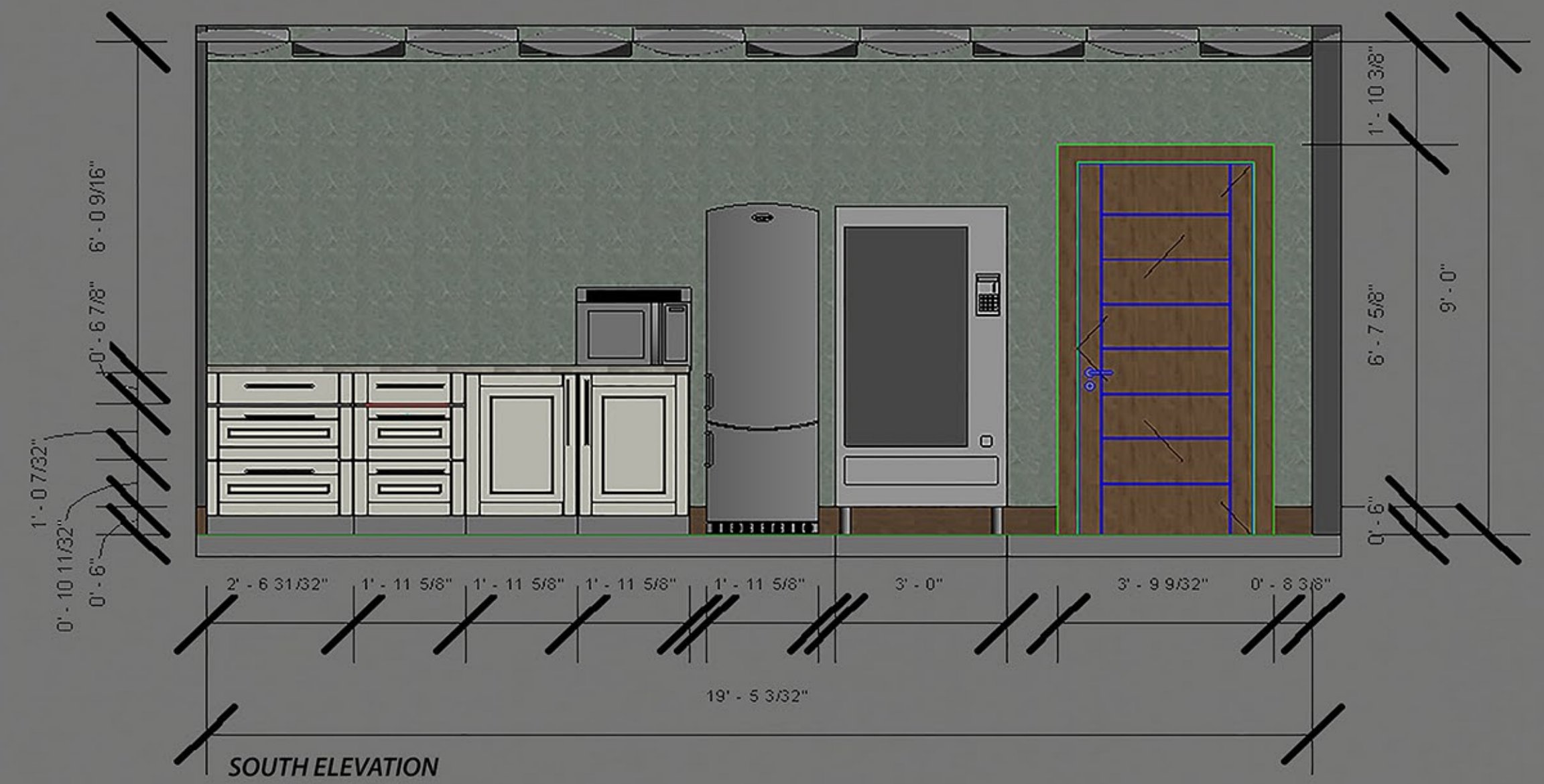
DARK EMPERADOR  
GRANITE COUNTERTOP



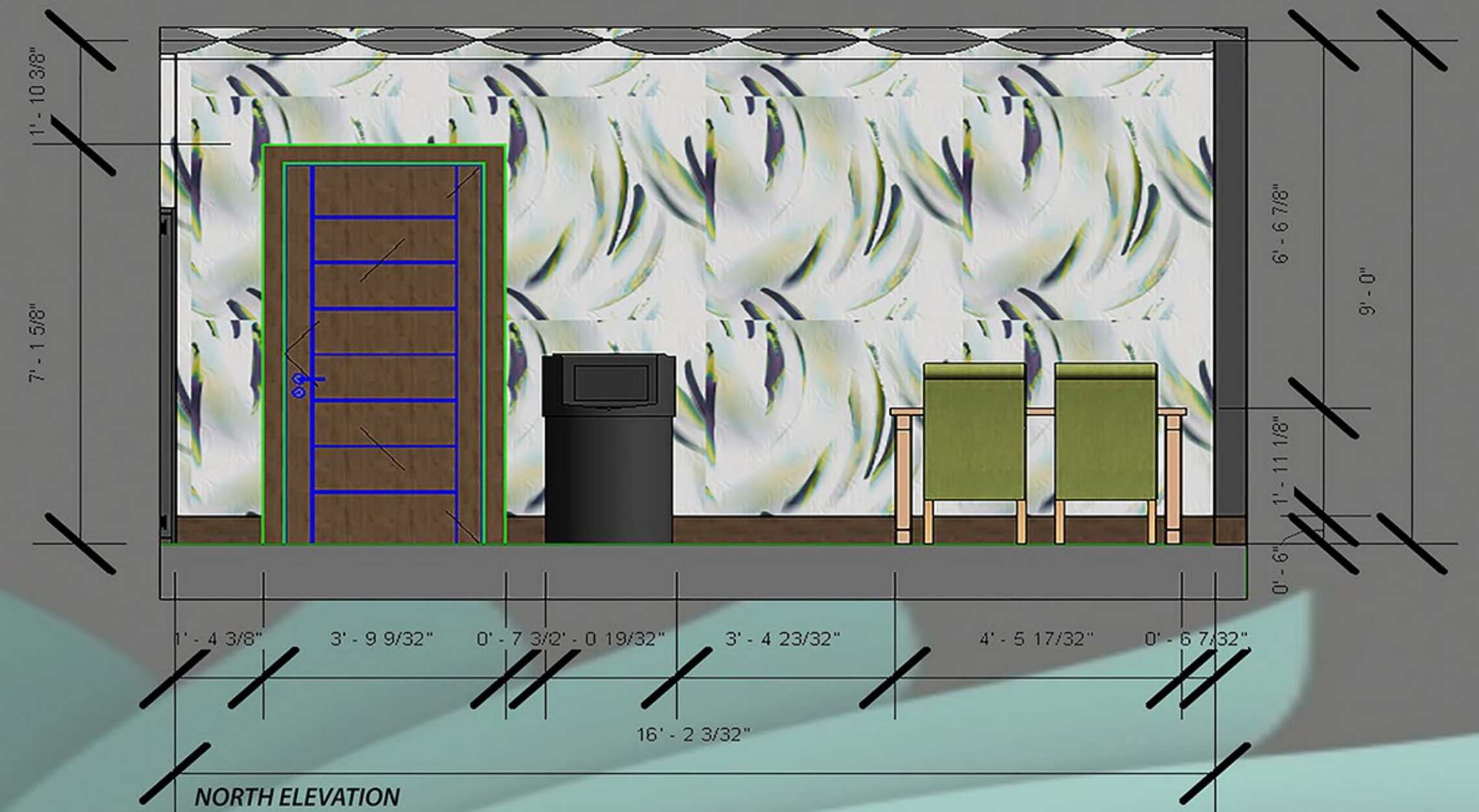
FLOORING  
SARLON OAK



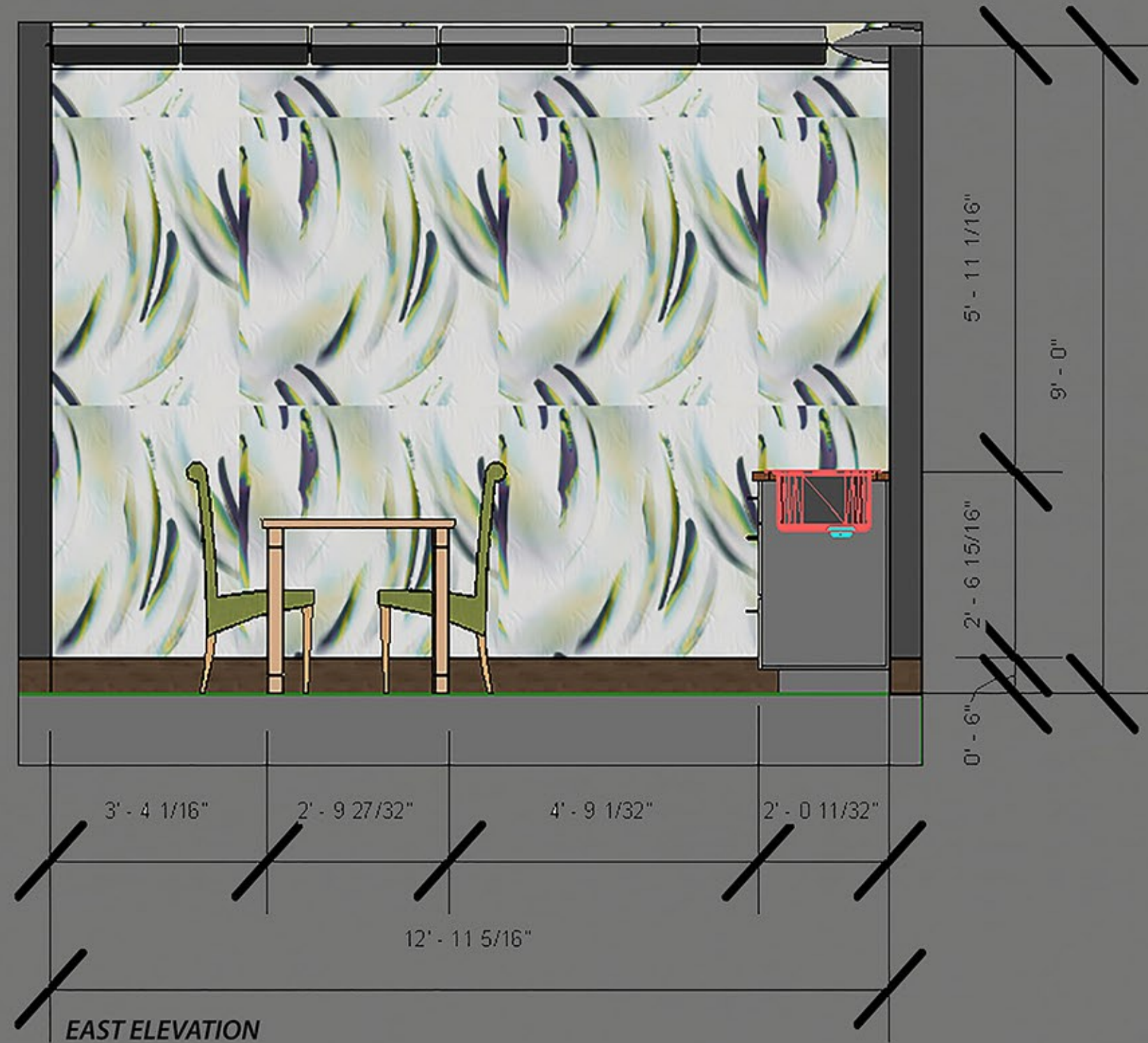
NORTH ELEVATION



SOUTH ELEVATION



NORTH ELEVATION

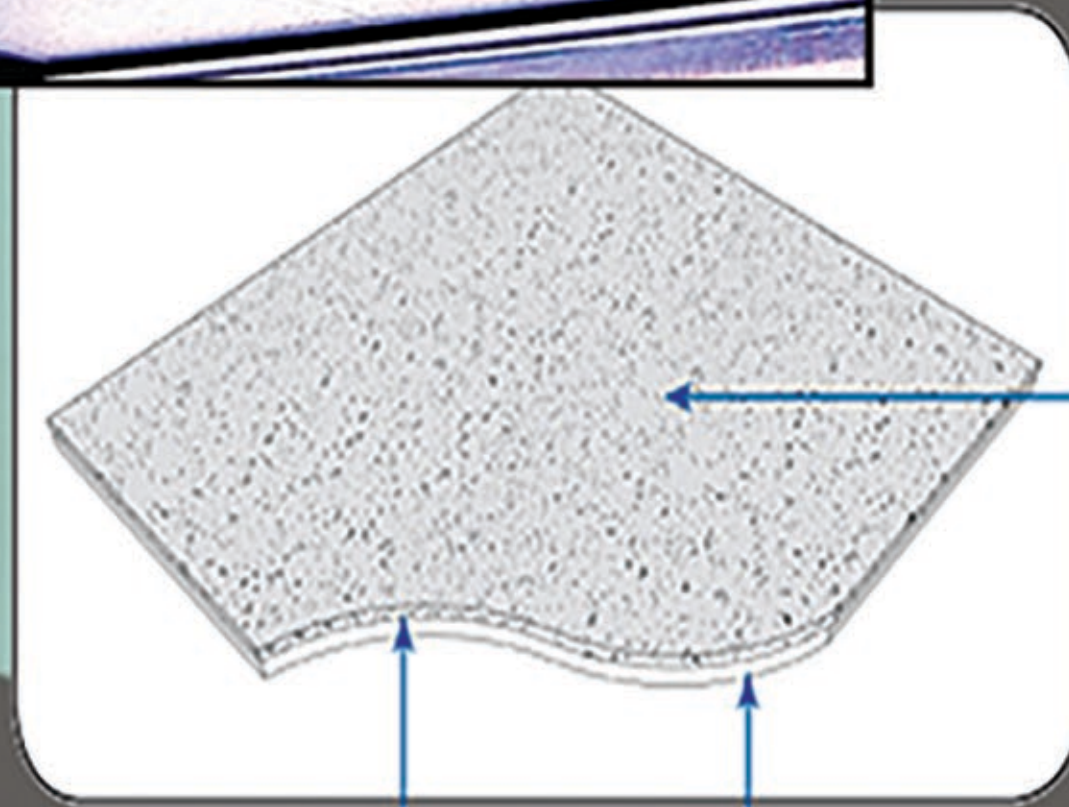
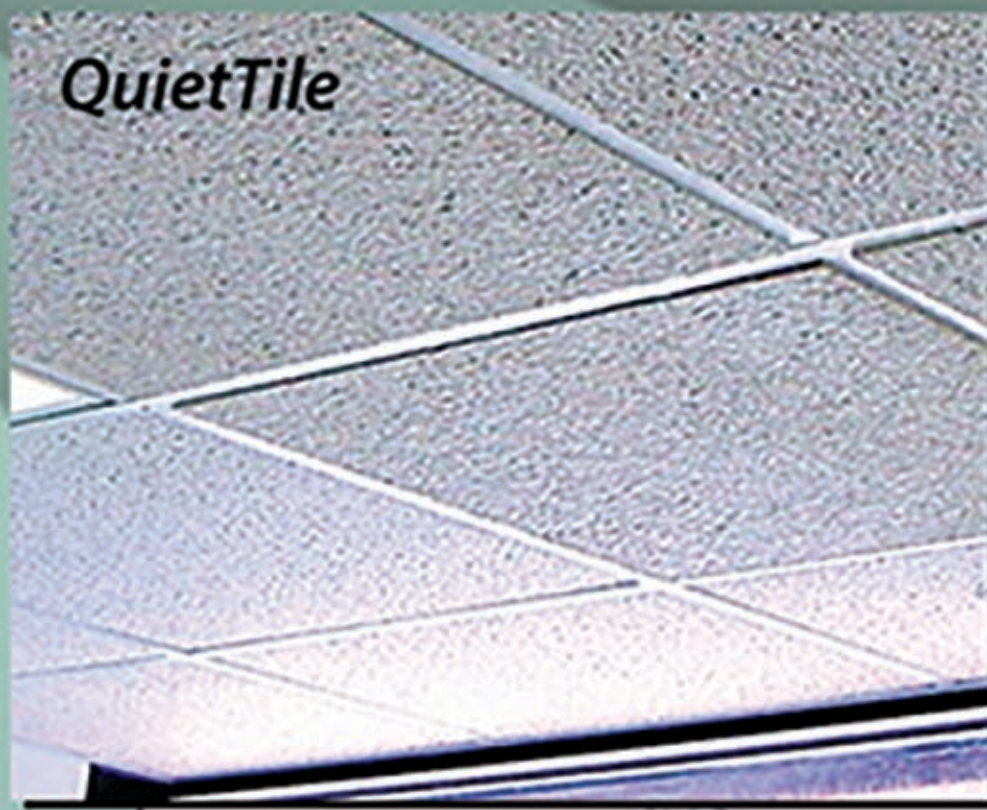


EAST ELEVATION

# BREAKROOM



# SOUND CONTROL



ACOUSTICAL CEILING TILE:  
MODEL SELECTED BY DESIGNER

SOUND DAMPING  
LAYER

GYPSON BOARD LAYER

*QuietTile provides a high CAC rating, 49-51.*

*Achieve sound control and speech privacy in a lay-in ceiling system where conventional ceiling tiles fail.*

*Available sizes 2 ft. x 2 ft. or 2 ft. x 4 ft. sizes*



SARLON  
OAK

## In-room impact sound reduction

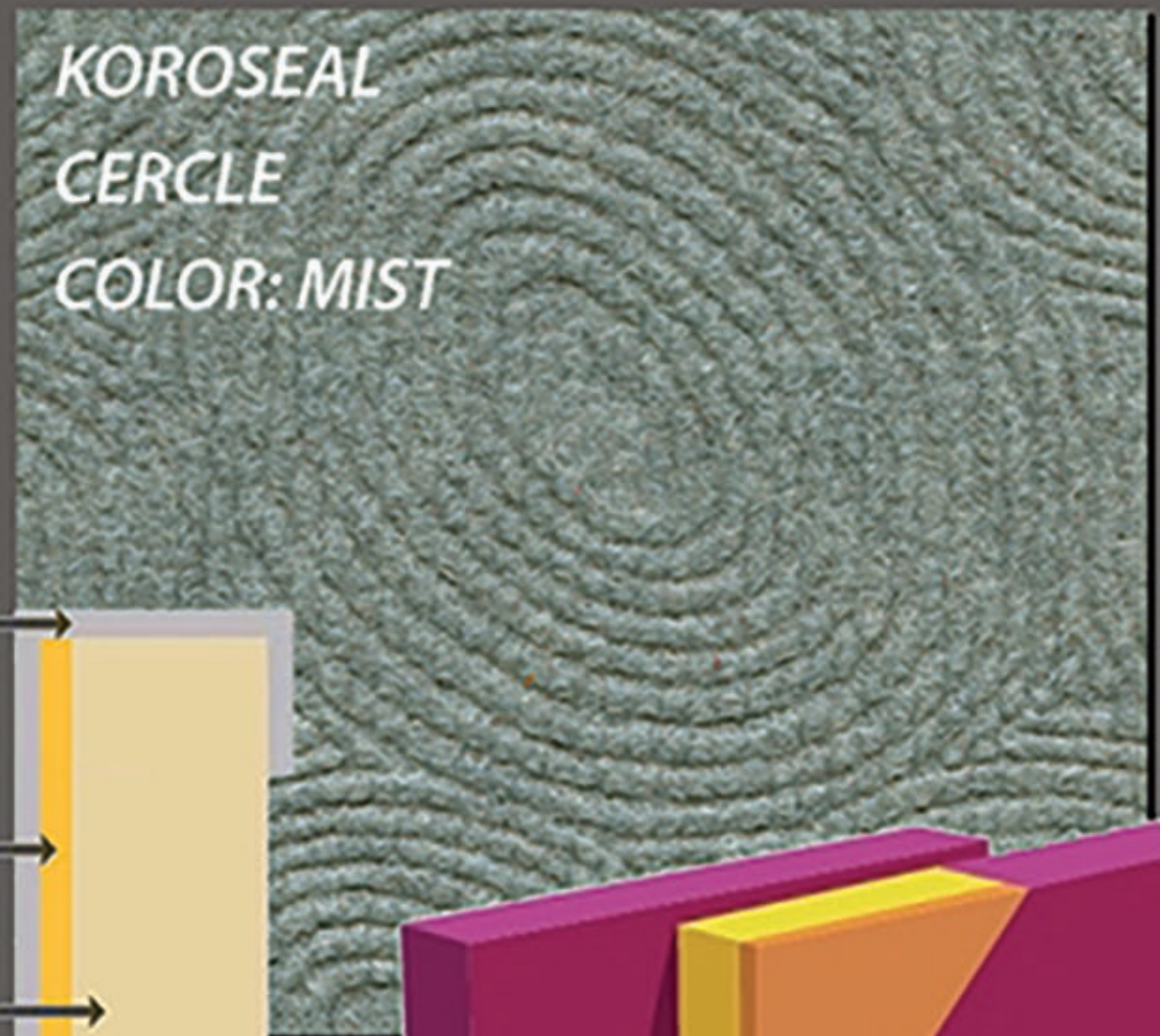
*In-room impact sound reduction is related to impact noise in the room itself.*

*The standard NF-S31-074 classifies all flooring in to various categories.*

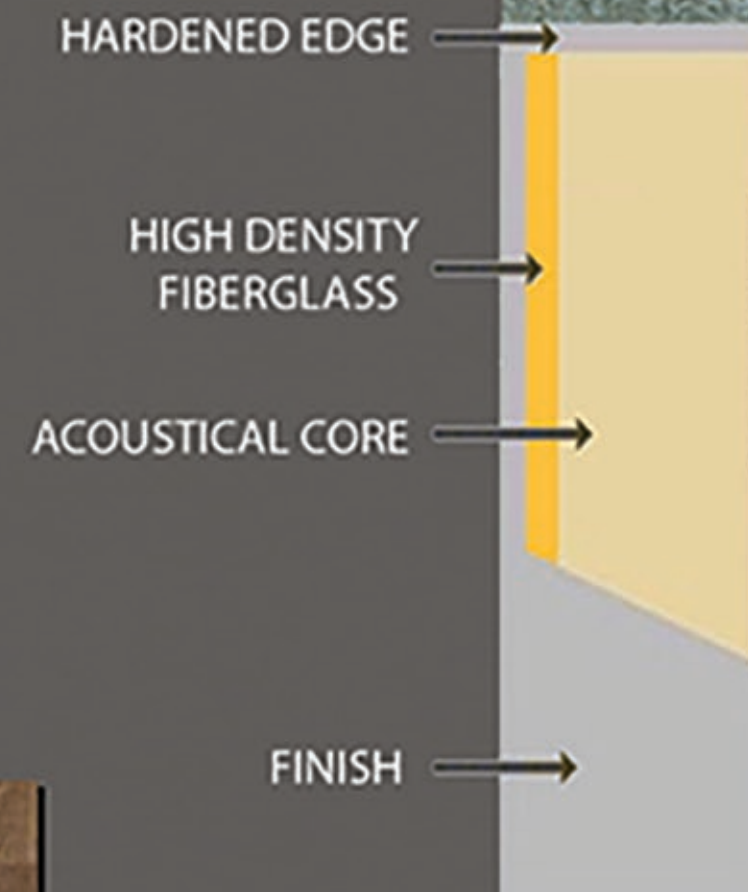
*All Forbo Sarlon floor coverings are classified in Class A: best in class!*

*Our Sarlon Oak acoustic vinyl flooring range presents 3 natural oak wood designs that gives your floor a natural look.*

*Oak combines excellent quality and natural design with a high impact sound reduction of up to 19dB.*



KOROSEAL  
CERCLE  
COLOR: MIST

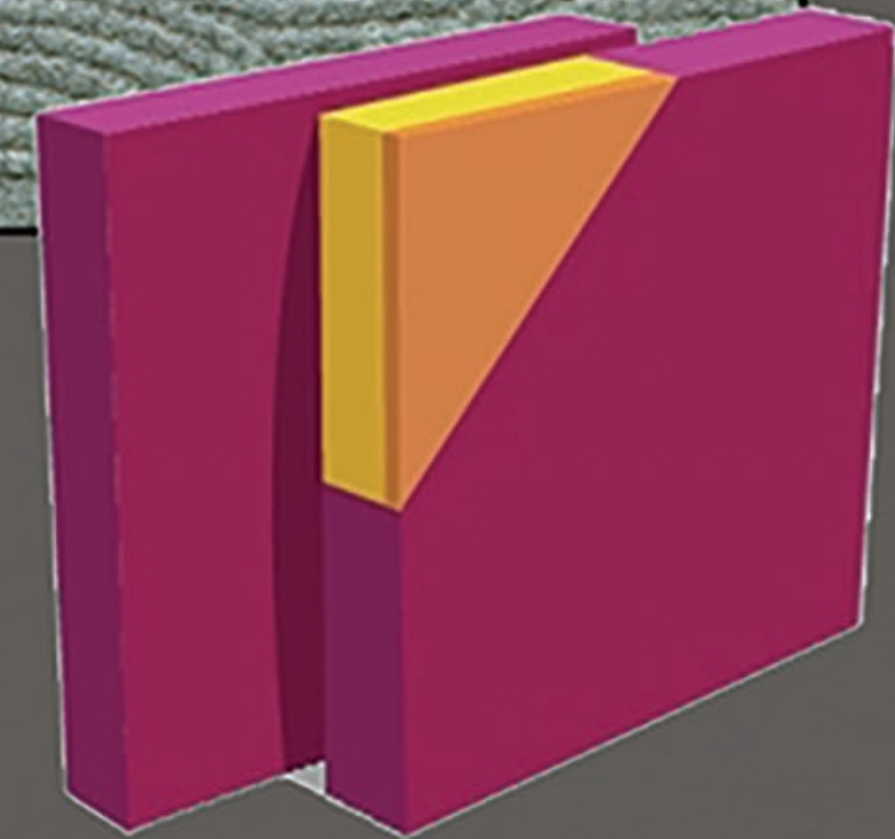


HARDENED EDGE

HIGH DENSITY  
FIBERGLASS

ACOUSTICAL CORE

FINISH



*Sound Designs Performance Plus Series is designed and manufactured to meet the demands of noisy, trafficked areas.*

*Constructed with a 1/8", 16-20 PCF density fiberglass face, our Performance Plus panels provide tackability, medium-impact resistance and exceptional acoustical performance.*

# CLINICAL EXAM ROOM ACOUSTIC CONTROL



# FF&E

Steelcase  
Think Office Chair

## MATERIALS

Up to 95% recyclable.  
Made with up to 28”  
recycled content.



## A MOVEMENT TOWARD WELL BEING

Today, we're seeing a shift from traditional ergonomics to a more proactive solution that encourages healthy living... One that focuses on the physical, cognitive, and social needs of today's workforce and understands how they're related.

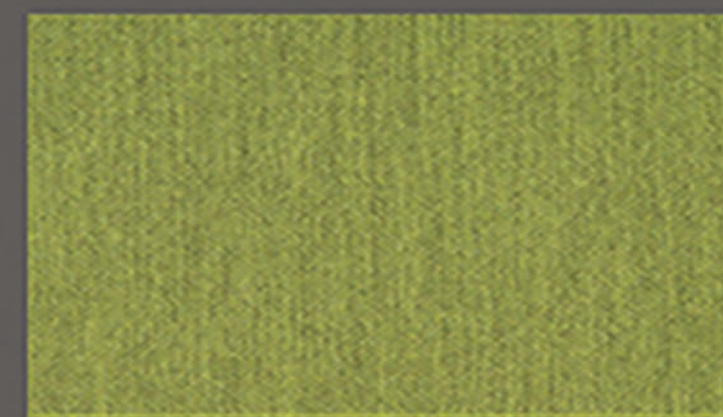
## MADE FOR PEOPLE WHO SIT FOR A LIVING

Think is the simplest, most streamlined embodiment of our understanding of people who sit and how they sit throughout the day. Our learnings are based on research and collaboration with universities, including the Technical University of Denmark, Michigan State University and the University of Vermont Back Research Center. To scientific studies, we add years of observational research in the workplace with people who actually sit for a living.

## FIT

People want uncomplicated adjustments. The Think chair's weight-activated mechanism recognizes your weight and adjusts itself accordingly. The comfort dial allows you to select one of four positions to adjust the amount of back tension and recline. Height, width, pivot and depth adjustable armrests provide personalized support for your arms.

## PHYSICIANS OFFICE



## UPHOLSTERY

Technical Specifications:  
Abrasion 100,000 double rubs  
Crocking-Dry class 5  
Crocking-Wet class 5  
Colorfastness to light class 4  
Breaking strength Warp 242lbs  
Breaking strength weft 322lbs  
Seam slippage- warp 100lbs  
Seam slippage- weft 100lbs  
Brush pill class 3



## ORIENTATION

People need to change their posture frequently to stay healthy and comfortable, and will do so if their chair allows them to recline, yet stay close to their work while reclining. The Think chair's weight-activated mechanism allows you to recline without leaving your ideal vision and reach zone. So you can lean back and be comfortable and still reach your keyboard and desk.