

MAIN STREET THEATRE

AUBURN INDIANA

GOALS

1. ENERGY EFFICIENCY
2. MIX OF TRADITIONAL AND MODERN DESIGN
3. VERSATILE SPACE
4. ACOUSTICAL MANAGEMENT
5. USING RECYCLED MATERIALS

CONCEPT STATEMENT

THIS OLD HISTORICAL BUILDING WAS HOME TO THE Y.M.C.A. FOR YEARS AND IS NOW BEING TURNED INTO A GRAND THEATRE THAT WILL BRING EXCITEMENT INTO THE TOWN OF AUBURN INDIANA. THIS THEATRE WILL BE AROUND 16,512 SQ. FT. AND WILL BE COMPLETELY MODERN ON THE OUTSIDE WHILE INTRODUCING A MIXTURE OF OLD AND NEW DESIGN THROUGHOUT THE SPACE. THE GOAL OF THIS SPACE IS TO ATTRACT AND EXCITE PEOPLE OF ALL AGES WHILE GIVING EACH PERSON WHO WALKS THROUGH THOSE DOORS A UNIQUE AND UNFORGETTABLE EXPERIENCE. THIS DESIGN WILL INCORPORATE ENERGY EFFICIENCY AS WELL AS CONTROLLING ACOUSTICS THROUGHOUT THE SPACE.

ELEGANT ~ TRADITIONAL ~ ENERGY EFFICIENT



FLOOR PLAN

1. LOBBY/RECEPTION
2. WOMANS RESTROOM LOUNGE
3. WOMANS RESTROOM
4. MENS RESTROOM
5. WARMING KITCHEN STORAGE
6. WARMING KITCHEN
7. SERVICE CORRIDOR
8. MEETING ROOM/ BANQUET ROOM

HISTORY

This two and one-half story brick structure was built in a Colonial Revival style. The gambrel roof has three shed roof dormers. First-floor windows are arched with brick voussoirs and stone keystones. The central entrance, also arched, is under a corbelled hood. Second-floor windows are simple, rectangular, one-over-one sash with limestone sills, decorative brick flanks, and limestone corner blocks. The classically profiled cornice runs across the front end gable ends. A two and one-half story gambrel roof wing extends along Fourth Street. All windows in the wing are rectangular—those on the second floor have the same decorative treatment as those at the front. Some of the windows are casement, some double-hung sash, some have been boarded over. A large, modern, noncontributing addition has been built at the corner of North Cedar and Fourth Street. The Y.M.C.A. was dedicated in April 1914. Mr. Charles Eckhart, a prominent buggy manufacturer turned automobile manufacturer and local philanthropist, joined with his son, Frank, in donating the more than \$55,000 needed to cover the expenses of the building. The Y.M.C.A. continued to serve area residents' recreational needs in much the same fashion until 1979, when a non-contributing addition to the building was constructed.



EXTERIOR PHOTO BEFORE RENOVATIONS

ELEGANT ~ TRADITIONAL ~ ENERGY EFFICIENT



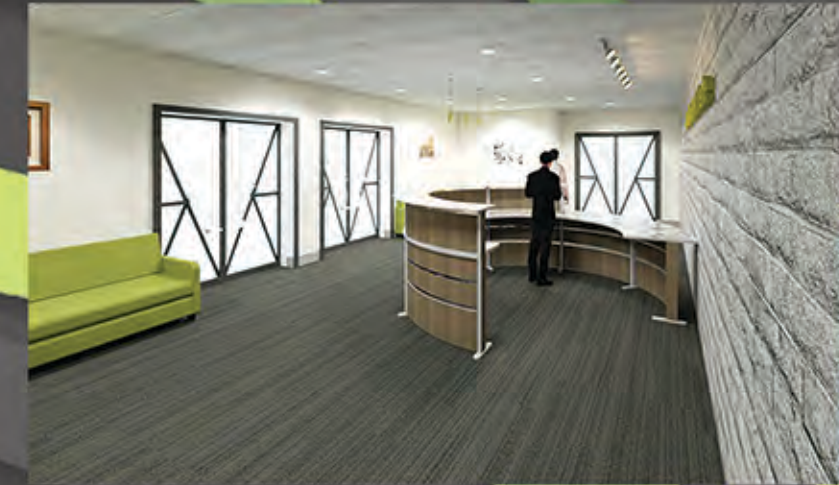
FLEXIBILITY ~ SUSTAINABILITY ~ VALUE

RECEPTION DESIGN CONCEPT

To accommodate the requests of the client the lobby space will be warm and inviting using the traditional style with some pops of modernism through the use of textures and bold colors. This space will also feature energy efficient design using LEED recommended products and materials. Upon LEED recommendations, the design will reflect the use of five-star energy efficient recessed downlights with LED lightbulbs as well as being placed on an energy efficient dimmer switches. Some of the materials within the lobby are actually recycled materials when you first walk into the space you are greeted with a feature wall that looks like a normal stone all but little do most people know is that you can actually use recycled concrete to make the stones that are featured in the lobby. The top of the reception desk will also feature recycled granite to incorporate a greener design. The use of grays and neutral colors are part of my traditional design while using a pop of green in the chairs and couches to create a touch of modernism to the design. Per the clients request keeping the space as a space that can be both seen as a theatre as well as a versatile space that can hold events from big theatre productions to the smallest of meeting spaces for local companies. In giving this to the client I created a space that is simple and inviting to all ranges of people.



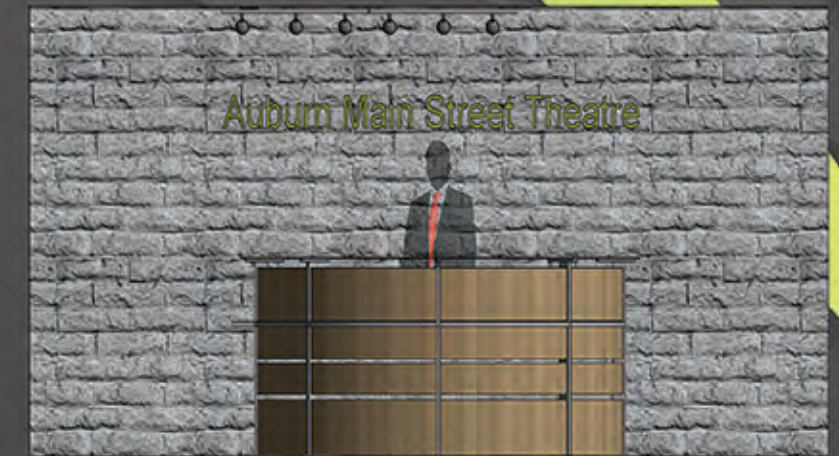
Reception Perspective



Reception Perspective



Reception Perspective



East Reception Elevation



NBF Compass Reception Desk



Steeplecase Health Siesta Chair



Steeplecase Health Siesta Sofa



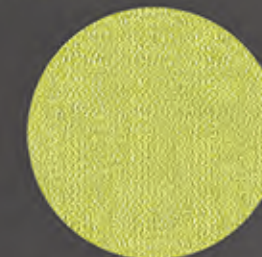
LED Reflections Torus Recessed Light Fixture



élan Sevier Track Lighting



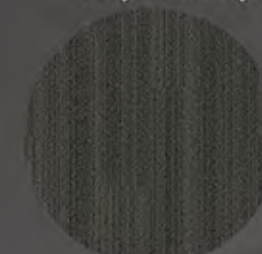
Elk Lighting Evergreen Mini Pendant



- All Seating Material
- Spectrum-Lime
100% Pre-consumer
Recycled Polyester



- East Feature Wall
- Recycled Concrete Blocks



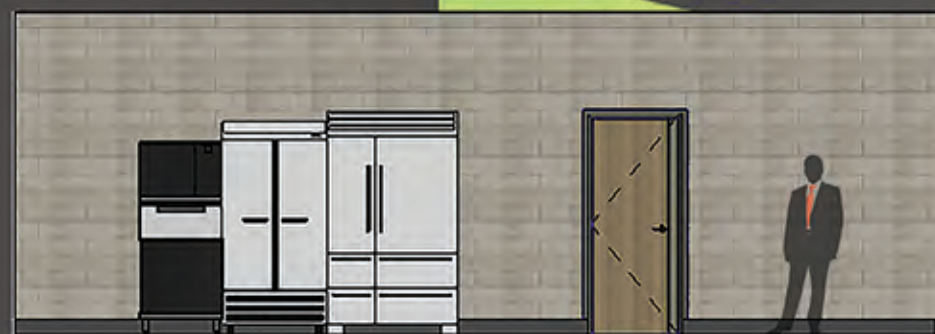
- Flooring Materials
- Interface Ebony Carpet Tile



- All Other Walls
- Sherwin Williams
China Doll



ELEGANT ~ TRADITIONAL ~ ENERGY EFFICIENT



West Kitchen Elevation



North Kitchen Elevation

FLEXIBILITY ~ SUSTAINABILITY ~ VALUE

WARMING KITCHEN AND BATHROOM DESIGN CONCEPT

Within the kitchen and bathroom spaces my design will achieve both functionality as well as become a space that is both good for the company and environment. Within this space my design has focused on using energy efficient fixtures while using the same type of LED lightbulbs that are used throughout the building. All water fixtures within these spaces will be recycling water through the sinks as well as the water fountains to be recycled into the LEED certified toilets that will be used in both men's and woman's restroom. We will be using materials that are recycled such as recycled granite countertops and recycled black wood to create the cabinets. This space will be set to an auto sense light switch to conserve the use of electricity as well as using five-star energy efficient appliances that are LEED certified. These spaces will be warm and inviting with the use of rich warm wood floors from Interface with a contrast to the black cabinets.



Kitchen Perspective



Kitchen Perspective

SUSTAINABILITY
CREATES AND MAINTAINS
THE CONDITIONS UNDER
WHICH HUMANS AND NATURE
CAN EXIST IN PRODUCTIVE
HARMONY



- All Work Surfaces
- Recycled Granite
Countertops



- Cabinet Material
- Recycled Black
Wood Cabinets



Artcraft 5th Avenue
4 Light Pendant



- Flooring Material
- Interface LVT for Kitchen
and Bathroom Floor



- Wall Material
- White Subway Tile
for Kitchen Walls



LED Reflections
Torus Recessed
Light Fixture



South Hallway Elevation



MAIN STREET THEATRE

AUBURN INDIANA

ELEGANT ~ TRADITIONAL ~ ENERGY EFFICIENT

GREEN DESIGN BUILDING CHOICES

The main feature for the Main Street Theatre is the going green concept, within this design you will see many features that represent energy efficiency as well as recycled materials. The concept behind these features is to be able to give back to the community both economically and environmentally. Below you will see the different ways Main Street Theatre materials are able to meet the going green concept.

ENERGY EFFICIENCY



- Occupancy sensors
- Dimming switches
- All LED lighting
- 5 star energy efficient appliances
- Hempcrete insulation
- Inner wall acoustic panels.

RECYCLED MATERIALS



- All flooring will come from Interface
- Interface creates carpet tile that uses recycled fibers as well as creating a seamless flooring between vinyl flooring and carpet tile.

WATER EFFICIENCY



- All sinks throughout the entire building will be on a water recycling system that will recycle all water "gray water" back into the toilets.
- Each toilet will be water sensing toilets that use 20% less water than the average toilet.



LED Reflections
Torus Recessed
Light Fixture



- Meeting Room Tables
- Haworth Branch Table



- Meeting Room Chairs
- Haworth Very Chair



Meeting Room Perspective

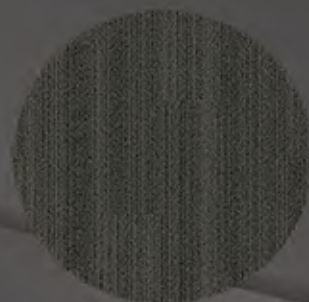
FLEXIBILITY ~ SUSTAINABILITY ~ VALUE

MEETING ROOM DESIGN CONCEPT

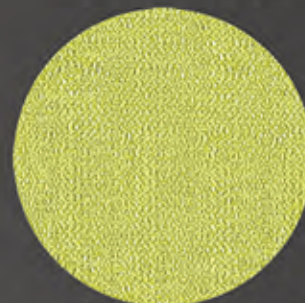
The goal of the meeting space is to create a space that is completely versatile. With this space, the client wants to create a space that can have many functions such as holding a banquet dinner to holding seminars with a removable stage. The space must meet a simple and easy transition style for any guest that may request to rent it out. This space will also feature the energy efficient aspects that take place throughout the rest of the building such as using a five-star rated recessed downlight with LED lightbulbs that will be connected to dimmer switches. Within this space you won't be able to see the acoustic changes but within each wall in this room you will have a recycled acoustic panel to block out noise from both the theatre and the lobby to always be able to stay formal to its guests.



- Wall Color
- Sherwin Williams
China Doll



- Flooring Material
- Interface Ebony
Carpet Tile



- All Seating Material
- Spectrum-Lime
100% Pre-consumer
Recycled Polyester